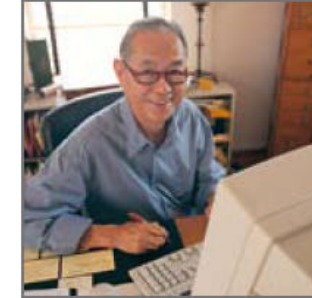
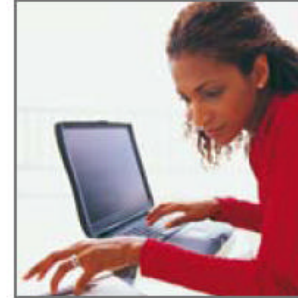
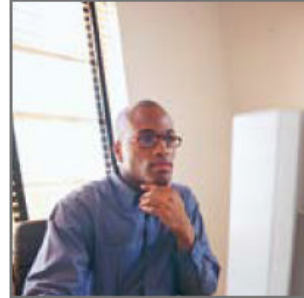
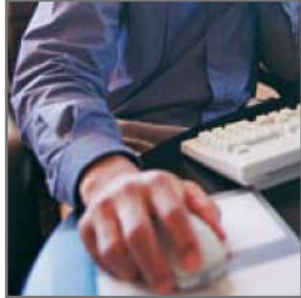


# IntegrateHR

"The Employee Measurement Experts"



## COMPANY OVERVIEW

**IntegrateHR** is an innovative, dynamic and customer focused employee measurement and development consultancy whose solutions add real value to its clients' operations. We provide a wide range of consultancy solutions and web-based software applications that meet our clients' employee measurement and development needs.

**Our** staff and associates have many years of experience in supporting executives, leaders and their teams from a wide variety of industry sectors, local government and NGOs.

With partners and associates around the world, **IntegrateHR** has the capability and technology to successfully deliver human resource projects to local, national, international and global organisations.

***"Employee measurement is the biggest single measurement area that separates successful from less successful firms."***

*AMA Management Review*



## OUR MISSION

Our mission is to deliver employee measurement and development solutions that enable our clients and their people to understand their current state and then maximise their performance potential.

## OUR VALUES

- ❖ Responsive Problem Solving
- ❖ Drive for Quality
- ❖ Best Practice
- ❖ Partnership Orientation
- ❖ Client Focus
- ❖ Working Environment

## SOLUTIONS OVERVIEW

- ❖ Human Resource Consulting and Audits
- ❖ 360° Feedback Surveys
- ❖ Employee Surveys
- ❖ Web-based Recruitment & Selection
- ❖ Organisational Culture & Values Consulting
- ❖ Innovation Consulting
- ❖ Competencies Design and Implementation
- ❖ Leadership Development Services and Training
- ❖ Customer Service Consulting, Systems and Training
- ❖ Assessment Centres Design and Implementation
- ❖ Performance Management Systems and Training

## OUR CLIENTS



## WHAT OUR CLIENTS SAY ABOUT US

**"Integrate360** was chosen by Egg as a feedback tool for its people development programmes. The tool was selected based on its functionality and cost effectiveness, alongside the technical expertise of the people at **IntegrateHR**. Egg has been delighted with the implementation process and the ease of use and reporting capabilities of **Integrate360**. In addition Egg found **IntegrateHR** highly responsive and flexible in meeting its requirements."

**Tony Atherton, People Programme Manager, Egg**

**IntegrateHR Limited**  
Bloxxham Mill, Barford Road, Bloxxham, Banbury, OX15 4FF UK  
Tel. +44 (0)1295 722833 Fax. +44 (0)8704 602968 [www.integratehr.com](http://www.integratehr.com)

© IntegrateHR Limited 2005

